

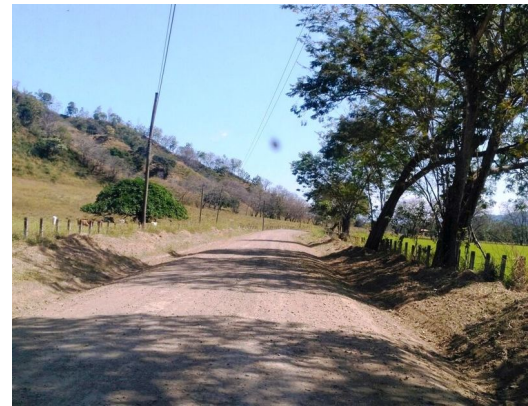
# Almost 1000 Acre Cattle Farm -Only \$.90 m2 - Complete - Near Beaches

# \$3,500,000

ID: 19998

📍 Paquera, Puntarenas

• Property Type: Land • Bedrooms: 8 • Built: 2005 • Size: 3870000 sq m • 956.32 Acres



- Status: Active/Published
- Bbq Area
- Furnished Fully
- Sub Dividable
- Parking Spaces
- Cable Satellite Tv
- Investment Opportunities
- Valley Views
- Acreage
- Development Farm
- Ocean View

## Property Description

Welcome to the largest farm available in the area, a true gem that offers the perfect canvas for your agricultural dreams. Priced at only \$0.85 per square meter, this is an unbeatable investment opportunity. **Property Highlights:** **Versatile Infrastructure:** This expansive farm boasts all the infrastructure you'd expect from a large ranch, including a spacious home, multiple workshops, and various farm buildings. Your vision can come to life here. **Abundant Water Supply:** Enjoy a dependable water source year-round, thanks to the Rio San Rafael flowing through the property. It's a vital asset for any agricultural endeavor. **Scenic Beauty:** Revel in the breathtaking landscapes this property has to offer. With a mix of flat pastures and gently rolling hills, you'll be treated to stunning ocean views that will inspire you every day. **Unbeatable Value:** Priced at just \$0.85 per square meter, this is the lowest price you'll find anywhere on the Peninsula.

## Additional

- ID 19998
- Active/Published
- 8 Bedrooms
- For Sale
- Land
- Parking Spaces : 20
- \$3,500,000
- 4 Bathrooms
- View : Landscape

**+506 8752-7000**

20 m South from Hotel Nantipa,  
Santa Teresa de Cobano, Puntarenas,  
Costa Rica.



REAL ESTATE AGENT

**Jim Shaw**

Jim Shaw

[US Toll Free: 877-309-9238](tel:877-309-9238)

[Costa Rica Direct: +506 8752-7000](tel:+506-8752-7000)

